



Steele Avenue, Greenhithe, DA9 9PH  
Guide price £475,000 - £500,000 Freehold



Guide Price £475,000 - £500,000 The Homes Group are delighted to present to the market this three bedroom link-detached house set within the sought after Worcester Park development. The home is very well presented throughout with a lovely garden, parking for three cars & located within a short walk of Greenhithe & Stone Crossing stations, Asda and Bluewater. Accommodation includes: entrance hall, cloakroom, study, two receptions, utility & kitchen with three bedrooms & bathroom on the first floor.

**Entrance Hall**

**Cloakroom**

**Study**

9'9 x 8'1 (2.97m x 2.46m)

**Living Room**

15'4 x 13'5 (4.67m x 4.09m)

**Dining Room**

10'9 x 8'9 (3.28m x 2.67m)

**Lobby**

**Utility Room**

5'7 x 5'2 (1.70m x 1.57m)

**Kitchen**

11'4 x 8' (3.45m x 2.44m)

**Landing**

**Bedroom One**

11'7 to wardrobes x 9'11 (3.53m to wardrobes x 3.02m)

**Bedroom Two**

10'10 x '9'11 narrowing to 8'5 (3.30m x '3.02m narrowing to 2.57m)

**Bedroom Three**

8' x 6'11 (2.44m x 2.11m)

**Bathroom**

6'6 x 6'4 (1.98m x 1.93m)

**Garden**

**Driveway**

**Garage Store**

**Tenure: Freehold**

**Council Tax: Band E**



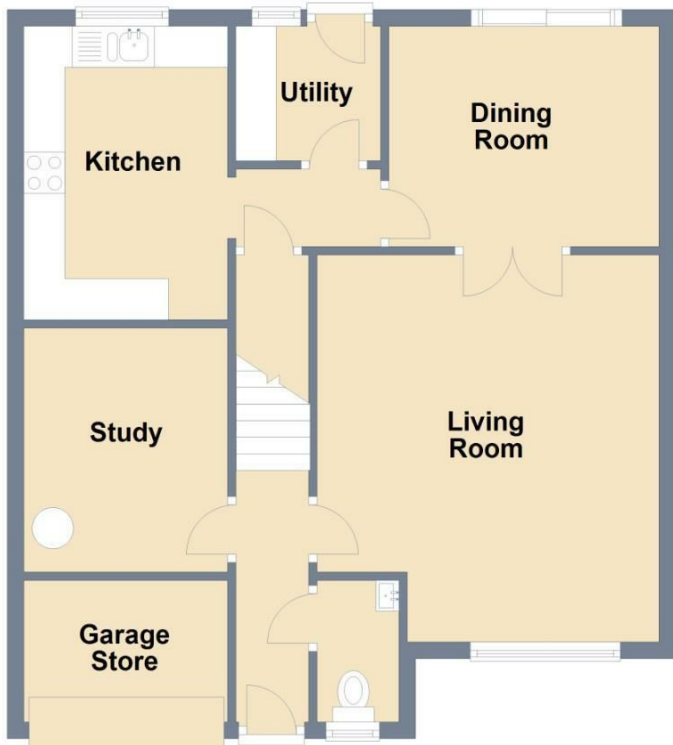






### Ground Floor

Approx. 62.0 sq. metres (667.8 sq. feet)

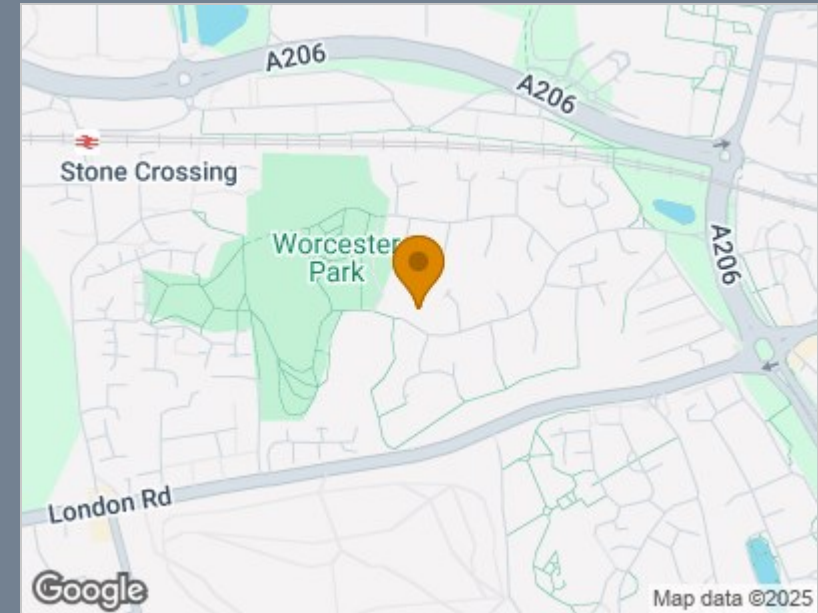


### First Floor

Approx. 38.3 sq. metres (411.9 sq. feet)



Total area: approx. 100.3 sq. metres (1079.7 sq. feet)



Energy Efficiency Rating		
	Current	Potential
Very energy efficient - lower running costs		
(92 plus) <b>A</b>		
(81-91) <b>B</b>		<b>81</b>
(69-80) <b>C</b>	<b>66</b>	
(55-68) <b>D</b>		
(39-54) <b>E</b>		
(21-38) <b>F</b>		
(1-20) <b>G</b>		
Not energy efficient - higher running costs		
<b>England &amp; Wales</b>	EU Directive 2002/91/EC	

### Viewing

Please contact The Homes Group Office on 01322 875000 if you wish to arrange a viewing appointment for this property or require further information.

These particulars, whilst believed to be accurate are set out as a general outline only for guidance and do not constitute any part of an offer or contract. Intending purchasers should not rely on them as statements of representation of fact, but must satisfy themselves by inspection or otherwise as to their accuracy. No person in this firm's employment has the authority to make or give any representation or warranty in respect of the property.

71-75 Shelton Street, London, WC2H 9JQ  
 T: 01322 875000 | E: info@thehomesgroup.co.uk  
 thehomesgroup.co.uk